



A stunning Penthouse apartment, located on the fifth floor of a beautiful Grade II Listed building within a short walk of the recreational facilities of Hyde Park and Kensington Gardens, offering spacious living accommodation, state of the art home automation systems, exquisite furnishings, and spectacular views towards the Natural History Museum and the surrounding area.

























Kensington Gardens

Hyde Park

Kensington Palace

KENSINGTON GORE

KENSINGTON ROAD

KNIGHTSBRIDGE

Hyde Park Corner

High Street Kensington

The Penthouse

Royal Albert Hall

KNIGHTSBRIDGE

Knightsbridge

QUEEN'S GATE

Science Museum

Natural History Museum

Victoria & Albert Museum

Harrods

EARLS COURT ROAD

CROMWELL ROAD

Gloucester Road

South Kensington

SOUTH KENSINGTON

OLD BROMPTON ROAD

FULHAM ROAD

CHELSEA

BROMPTON ROAD

SLOANE STREET

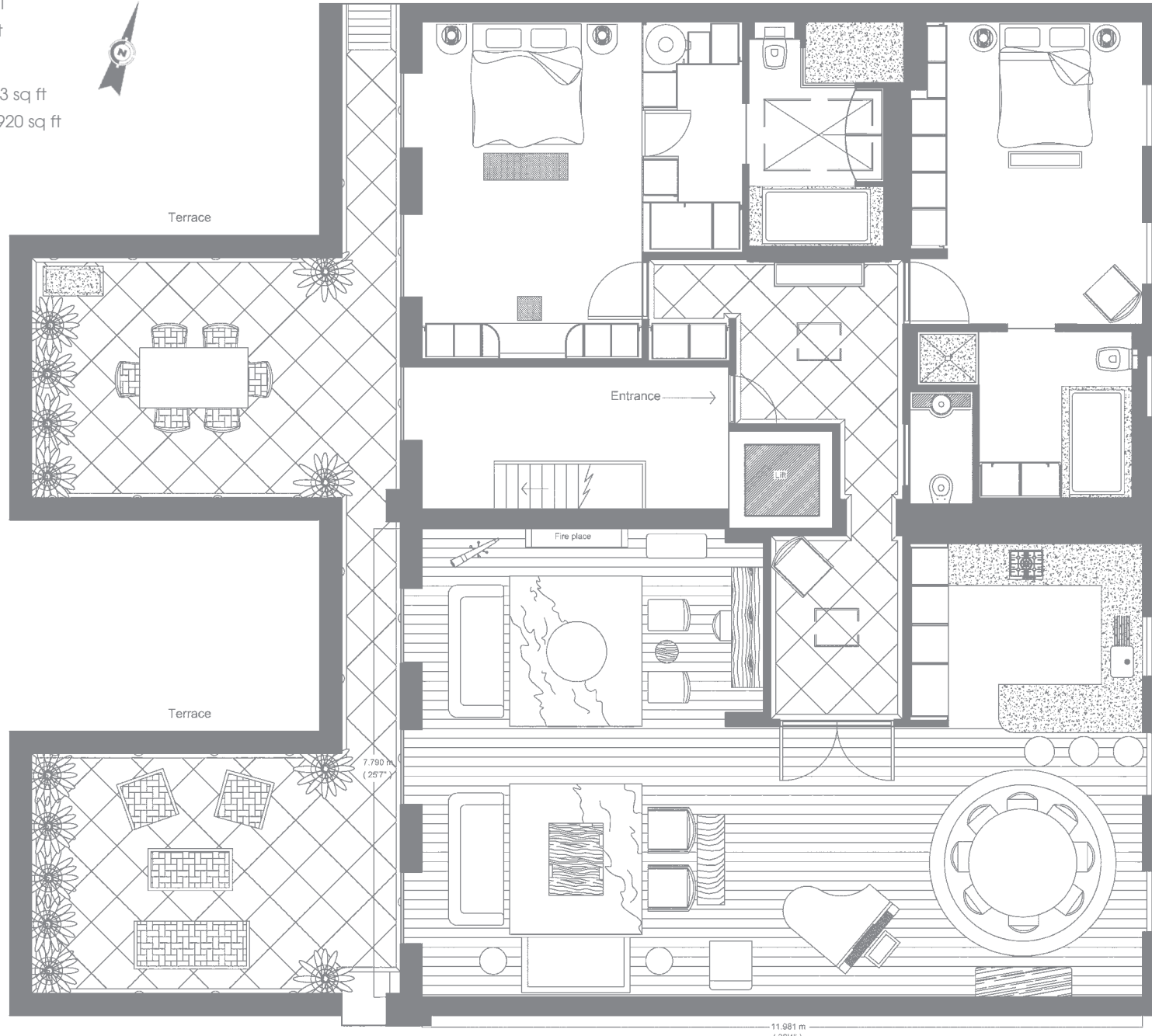
KINGS ROAD

BELGRAVIA

Sloane Square

Total Internal / External  
235.5 sq m / 2,534 sq ft

Rear Terrace: 57.0 sq m / 613 sq ft  
Gross Internal: 178.5 sq m / 1,920 sq ft



11.981 m  
(39'4")

All areas stated are approximate

## **ENTRANCE**

A dramatic double entrance sets the tone for this incredibly stylish apartment.

On the floor there is a sophisticated combination of grey marble tiles and a beautiful antique brown skirting and border stone into which tiny LED lights line the perimeter.

The walls have been finished in silk and there are two specially commissioned double-tiered Swarovski crystal chandeliers that hang from domes each delicately hand finished in white gold leaf.

A bespoke console fills the space perfectly and has an inset leather top with white gold leaf details which accentuate the beautiful lines of the ebonised top and base.

Behind this hangs a stunning full height mirror with a hand finished ebonised frame and white gold leaf detailing to compliment the console.

Two hand-embroidered doors depicting a 'starburst' pattern cleverly hide the AV cupboard and lead you to the master bedroom suite.

Solid mahogany doors feature throughout the apartment and add a sense of grandeur and sophistication to the interior.

## **RECEPTION SPACE/DINING ROOM**

Divided into two areas by clever use of furniture, this impressive open plan room is highly suited to entertaining, with a fabulously stylish dining area complete with a baby grand piano, and an elegant reception room with ample seating and stylish fireplace.

The furniture is bespoke throughout, and is complimented by an array of luxurious fabrics and stunning furnishings.

These include three wool rugs, full length silk curtains to all windows, with bespoke ribbon and hermatine tie-backs, cashmere and velvet throws and a stylish collection of art-deco inspired cushions.

At one end, an opulent dining table provides a focal point and seats eight comfortably.

Behind this a masculine credenza stands proudly against the wall providing the perfect serving area when entertaining.

The main reception area offers both formal and relaxed seating and is complimented by a handsome stone fireplace (remote), and a 50" plasma screen offering the best in home cinema entertainment.

The desk area is also an attractive, yet functional design feature.

Fargain has carefully selected the artwork to compliment the space and add to the ambience of this stylish apartment.

A private terrace can be accessed through the double doors which line the perimeter of the room.

Wall to wall walnut flooring throughout.

## **KITCHEN**

The kitchen has been designed by 'Smallbone' with solid walnut units and silver handles, a stylish breakfast bar, and black granite work surfaces.

There is a double fridge freezer by Sub-Zero and Miele appliances throughout, including an integrated coffee machine, wine cooler, gas hob and impressive extractor.

The floor mirrors that of the hall, with polished grey tiles and a dark stone border.

## **CLOAKROOM**

The jewel of the property!

The walls are lined in a hand embroidered, hand painted silk wallpaper depicting a pattern specifically designed and coloured by Fargain.

The vanity unit has an elegant bow-fronted section to the centre and bevelled smoked and mirrored tiles that line the underside of the marble and glass top.

The hand blown glass basin was specially commissioned by Fargain and is accented with tiny fragments of silver leaf, which are highlighted by the Swarovski crystal downlighters.

Full slab of black granite to the floor.

## **MASTER BEDROOM AND DRESSING ROOM**

The elegant master bedroom suite is home to an array of luxurious materials.

There is a sumptuous silk carpet throughout and silk panelling to the walls, which provide the ultimate backdrop for the exquisite bespoke furniture.

The bed, based on an art-deco design, with its stylish show frame and buttoned headboard, is adorned with a stunning collection of individually designed and hand finished silk and beaded cushions.

Two bow-fronted side tables with leather tops sit to either side of the bed and are complimented by elegant nickel lamps with silk shades.

Opposite the bed, a glamorous, yet functional cantilevered dressing table nestles between the curved silk walls and is beautifully hand finished in wood and leather.

Above this a 42" mirrored plasma screen provides superb yet discreet entertainment.

Elegant silk curtains with bespoke ribbon and crystal tie-backs lead you out onto a private terrace.

The dressing area, conveniently located off the main bedroom, boasts ample storage for both long and short hanging.

Custom made from the finest quality grey hawthorn, with silk padded doors and tactile horn handles, it creates a stylish yet practical space for 'his' and 'hers' storage.

## **MASTER BATHROOM**

The luxurious master bathroom has an impressive double vanity with nickel fittings, shagreen doors and a solid marble top.

There is a walk-in steam shower, a jet bath and recessed 23" Aquavision TV.

To either side of the vanity unit are two Swarovski crystal wall lights, commissioned and designed by Fargain.

The ceiling has been beautifully finished in pearlised venetian plaster and white gold leaf.

Full height marble slab throughout.

## **GUEST BEDROOM**

Like the master bedroom, the guest bedroom boasts a silk carpet and padded silk walls throughout, but this room offers an entirely different feel with its light, silvery tones.

The deep-buttoned headboard is supremely elegant and provides the perfect backdrop for the stunning collection of bespoke silk and beaded cushions.

There is a glamorous fur and pearl throw at the end of the bed and a fabric covered plasma lift for the 37" screen.

The wardrobes are upholstered in a beautiful pattern and are accented by Swarovski crystal studs and mink and crystal key tassels. Inside there is an abundance of wardrobe space.

The beautiful silk curtains are held back by stunning crystal and pearl tie-backs. There are spectacular views towards the Natural History Museum and the surrounding area.

## **GUEST BATHROOM**

The elegant en-suite has a bow-fronted vanity unit with nickel fittings, shagreen doors set in a diamond pattern to compliment the theme of the room, and a solid marble top.

There is a walk-in shower, jet bath and recessed 17" Aquavision TV.

Full height marble slab throughout.

## **TERRACE**

A tranquil, yet stylish haven for relaxation and entertainment.

There are two spacious (private) terraces which can be accessed via the double doors in the master bedroom suite and the reception room. Both are linked by a small walkway.

The floor is a calming combination of limestone tiles and a grey slate border, which together with the rendered walls and elegant planting, create a serene yet stylish setting for the two seating areas.

There is casual seating for four, and dining for eight.

## **TECHNOLOGY AND FEATURES**

State of the art home automation systems and surround sound have been discreetly incorporated throughout the apartment, as well as a highly sophisticated lighting system and electric curtains and blinds.

The AV system is centralised and can therefore be accessed from every room via individual wall mounted touch screen panels or hand held Crestron units.

All rooms are fitted with telephone points, plus category 5 cable points suitable for all computer networks.

The apartment is fully air conditioned with advanced heating and cooling from a central plant.

In-wall speakers throughout.

All floors, including the rear terraces, are fitted with electric underfloor heating.

## **SECURITY**

The apartment is fitted with a highly sophisticated alarm system, including internal infrared movement sensors, smoke detectors plus a video entry system.

There is a porter on duty weekdays, from 8am until 5pm.

